

BAIS[®]

 the scalable ERP Software



BAIS :: Primary Modules



Purchase

Indenting, RFQ, Approval,
PO, Work Order,
SPR, SQR
(supplier performance & quality
rating)



Inventory

Gate Entry, Receipt, Issue, Job work,
Purchase Return,
Warehouse & Bin Management,
RM Traceability,
FIFO Tracking,
UID Integration
(RFID, Barcode, QRCode)



Quality

IQC, FQC,
Batch Tracking,
Rejection,
Deviations,
Specification wise testing,
AQL (accepted quality level)



Manufacturing

BOM, Production, MRP, Scheduling,
Forecasting, Operation,
M/c Utilization,
Shop-Floor Planning ,
APPH & OEE
(overall equipment effectiveness)



Sales and Distribution

Order Processing, Invoicing,
Sales Return, E-commerce EDI,
Discount & Scheme,
Sales Dashboard,
Sales Analytics
(Quantity, Value & Item wise)



Finance

Account Segment, Chart-of-Account,
Vouchers Entry, Party's Bill Process,
Payments (payable & receivable),
TDS & ITR, Banking,
Fixed Assets



Taxation

GST Structure - SGST, CGST & IGST,
Return Filing - GSTR 3B, GSTR 1,
ITC-04,
GSTR-Einvoicing , E-way Bill

BAIS :: Additional Modules



Plant Maintenance

Machine Master,
Complaint Login & Solutions,
Preventive Maintenance,
Planning & Scheduling,
Energy Meter & Resource Entry
MTTR, MTTF



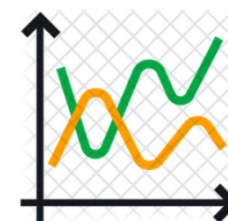
Engineering

Feasibility & NPD,
Project ID Creation,
Master of Bill of Material,
Process Routing, Task Creation,
Planning & APQP Chart
Final Testing, MES Forecasting



Tool Production

Enquiry & Project ID Creation,
Mould Master Setup,
BOM & Job Order Creation,
Resource Entry,
FQC & Specification,
Tool Costing & APQP Chart



SPC

(statistical process control)

Parameter of PQC, Data Collection
LSL, USL, CL as per process
Statistical Analysis -
X-bar, R, Mean, SD, Cp & Cpk



Costing

Cost Centers,
Element Groups,
Expenses Uploading,
Allocation of Cost Centers,
Operation Cost (activity wise),
Final Product Cost



CRM

(customer relationship management)

Market Segment, Contact Management,
Promotion & Coverage,
Lead & Enquiry, Flowup
Quotation, Order Finalization
Customer Complaint & Solutions,
Case & Warranty Management



HRM

(human resource management)
Employee Master & Salary Setup,
Attendance Integration,
Leave Management,
Payroll - Salary Processing, Statutory Deductions,
Employee Skill, Training Plan & Recording,
PMS (performance management system)

BAIS (**Business Area Integrated System**) is an auto-communicating & discipline of various business processes

16 +
Years Of
Experience

44 +
Successful
ERP Implemented

06 +
Highly Skilled
IT Professionals

50 +
Clients
PAN India

Our USP

Advanced
Technology

Industry
Specific Solutions

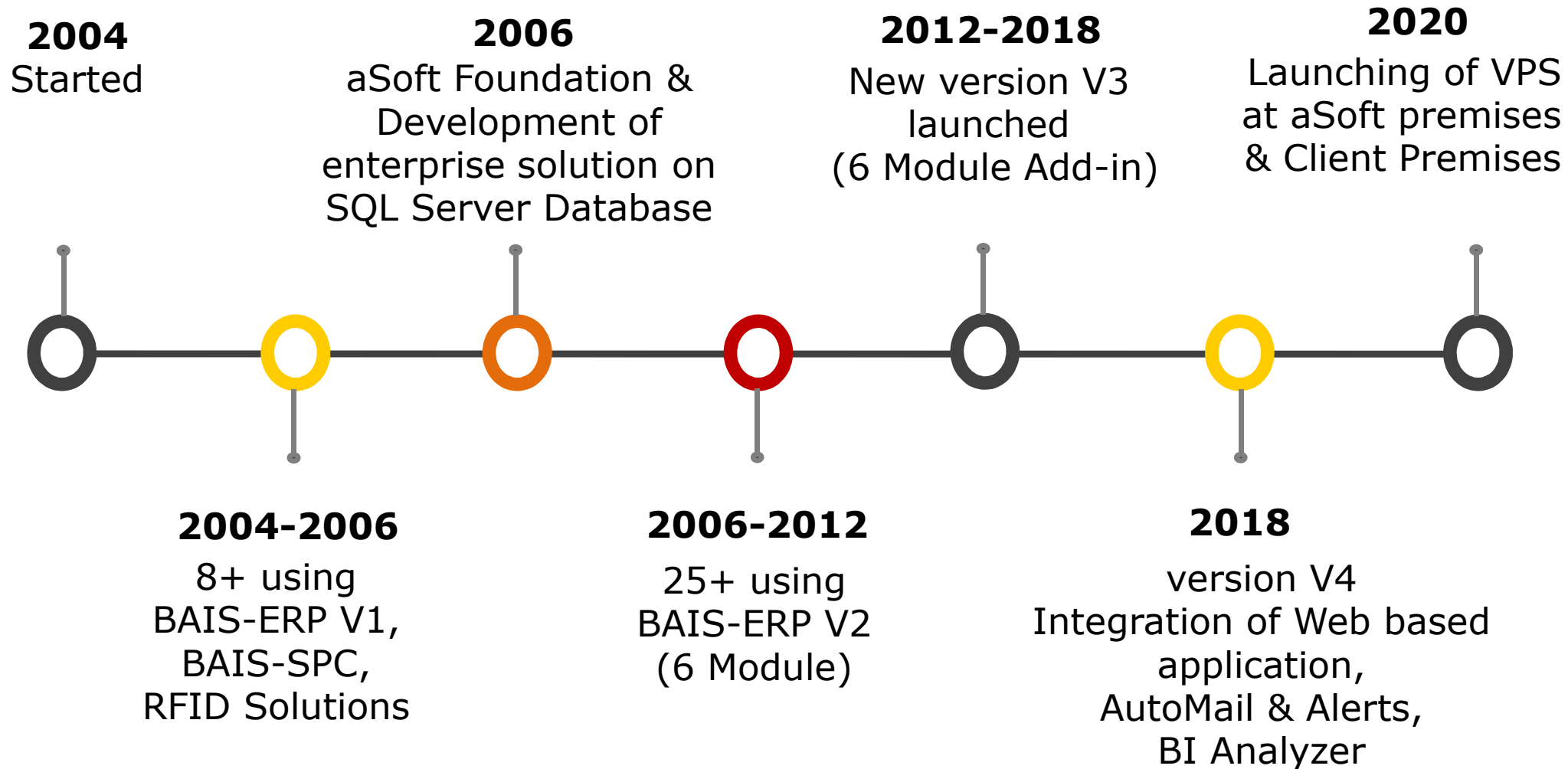
Low
Total Cost of
Ownership

Short
Implementation
Period

100 %
Successful
Implementation

AI
base
Helpdesk

"An innovative technology"



aSoft harnesses the **Power of Integrated Solutions & Services**



Business Acumen + Technological Expertise

Translated into Seamless User Experience
(Solution Stack - One Product Platform)

Implementation Expertise –
Strategic focus last mile deliverables

Industry Specific **integrated solutions**



Manufacturing Industry

Process -Batch -Discrete



Trading

FMCG–Electronics–Minerals –Metals –Agro –Chemicals



Services

Product : Infrastructure, Transportation,
Warehousing, Repair & Maintenance

People : Financial Services, Security Services,
IT Services, Education

Holistic, Robust yet simple



Global System

Multi Organization Structure
International Accounting Standards
Multi Currency, Language



Industry Specific Solutions

15+ Business vertical specific solution



High Degree of Customization

Business Critical Needs
Key Performance Indicators



Superior Implementation

Priority to Key Process
Quick Project Roll out

1. Purchase

▪ Vendor Management

Approval, Activation and De-activation, ABC Analysis and Black List

▪ Supplier Item Master

Supplier Part Numbers, tax, payment terms, Unit of currency, Lead time etc.

▪ RFQ, Supplier Quotations & Approvals

▪ New Vendor finalization against RFQ approval

▪ Vendor price Comparison

▪ Indent Management

On line Purchase Requisition

Auto Indent against MSL (minimum stock level)

Auto updation of Indent Status

Cancellation of Indent

▪ Purchase & Work Orders management

PO Approval, Reject, holds & Closure, amendment

Standard Terms & conditions,

Order Document Print

Alternative Units of Measurement

Current Inventory Parameter display at PO raising

▪ Approval Mechanism ::

Multi-user, Value & Hierarchy wise

▪ Analysis & Reports

SPR statement :: vendor performance and ranking

Purchase Statistics Report

Purchase & Work Order :: Register & Summary

Indent Register

2-1. Gate Entry

▪ Inward Register – receiving of any type of material (purchase, job work, returnable challan)

▪ Outward Register – issue of any type of material (invoicing, job work, returnable / non-returnable challan)

2-2. Inventory

▪ Material Receipt against Gate Entry

Auto filtration of Material against approved vendor PO

Statutory Compliance :: Transportation & Eway Bill

MRR Generation after Receipt Approval

Stock Inward to user define Warehouse & Bin after IQC

▪ Material movements control on FIFO basis

Issue on shop floor against approved requisition

Issue outside against approved challan (RGP/NRGP)

Cancellation of User Requisition (ISV / RGP / NRGP / RTS)

Receipt against RGP and approved RTS (return to store)

▪ Job work (Subcontractor) management

Issue against approved BOM as per production request

Reissue against short issue

Receipt against issuing JW challan & approved work order

Summary of outstanding stock at job worker end

Reconciliation & Register of Job work issue & receiving

▪ Purchase Return through vendor rejection invoice

Issue against IQC rejected material

Issue against Process rejected material

▪ SFG stock inward against approved production & FQC

▪ Daily FG Credit & Stock Inward

Receiving after final Quality inspection & approval

Sales Return Receipt

▪ Stock Transfer :: Warehouse-to-Warehouse, Branch-to-Branch

▪ Stock Analysis & Reports

Slow moving / non moving / obsolete item

Stock Register & Ledger

Stock Valuation methods with FIFO / LIFO / WAP

Traceability of Item's Bin-Batch-store location

Daily stock inward register

Material purchase register

Vendor Rejection Register

FG Dispatch Register

Customer rejection register

2-3. Inventory Control

- Multi-warehouse Control
- **Item Master** :: image, warehouse & physical location setting
- Parameterization of Inventory Levels ::
ROL (re-order level), ROP (re-order point), Min & Max, Average consumption
- Auto Indent of ROP as per ROL
- Physical Inventory verification and short/excess adjustment
- Purchase Orders Closure after stock inward

3. Quality - IQC

- Elaborate Quality Specification Master
 - User defined Item wise
- Supplier Material Inspection after MRR
 - Acceptance and Rejected
- Re-inspection of Material
- Production Material Specification
 - Acceptance, Rejected and Rework
- Product Test Certificate Specifications and issuance
- Specifications Size conversion option for different measurement systems
- Quality checks on Customer Return
- Option to mark quality must for critical items
- Workflow and seamless integration with related Business Processes
- Statistical Analysis and Control in every Processes
- IQC and FQC check under AQL system
- Supplier Material Rejection Summary
- SQR (supplier quality rating) Statement
- Production Material Rejection Summary

4. Manufacturing

- Routings & Product significant management
- **BOM Creation** - Multi-level & Process wise
- **Operation Management**
 - Production lead time,
 - M/c and Manpower capacity
- **Planning Control**
 - Projection and Customer Order Planning
 - Order-to-Production
 - Lot card Creation,
 - Alternative RM Utilization
 - MRP-I [material requirement plan]
 - Supply, Demanding, Resource Planning
 - Auto Indent to Purchase & Store
 - Production Order Schedule
- MRP-II [material resource planning] - Planners workbench
- Resource tracking
- Forward and backward scheduling
- Machine Loading & Planning Derivative & Schedule
- **Production control**
 - Operation & Machine wise production
 - Final production
 - By-product production control
 - Rejection and M/c break down
 - WIP control - Auto RM consumption
- Rework treatment
- Plan & Lot cancellation
- **Analysis & Reports**
 - Planning Register (Drill down to details up to LotNo)
 - DPR (Daily Production Report)
 - Rejection & wastage
 - Machine break down
 - OEE (overall equipment efficiency)
 - WIP Statement & Summary
 - RM Shortage Status

5. Sales & Distribution

- **Customer Management**
 - Payment Terms, Credit limits
 - Customer item :: Part Numbers, Units, Sales Price
- **Order Processing**
 - Sales Order Receiving & Scheduling
 - Pricing & Discount approval
 - Order Expiring validation
 - Multi Currencies option
 - Auto Configuration of Taxation – HSN & GST %
 - Scan order document attachment option
- **Dispatch Management**
 - Dispatch Advice & Sale Order Booking
 - Material Packing :: BARCODE / RFID / QRCODE
 - Invoice Generation – Domestic & Export
 - Shipment instructions to Logistics
- **E-commerce EDI**
- **Outlets Management**
 - Daily stock receiving from production
 - On line stock transfer OR manual entry
 - Stock inward into branch stock
- **Online Billing**
 - Stock visualization with Image, MRP price, Sales price
 - Parameterization of billing – cash, cheque, online banking
 - Auto stock deduction after billing finalization
 - Auto sales, payment receivable voucher creation
- MRP rate calculation on Invoice
- Sales Targets and Forecasting
- Sales Plan on historic parameters and capacities
- **Analysis & Reports**
 - Customer Order Tracking
 - User defined aging of Sales Due date
 - Balance order status
 - Sales register
 - Sales summary – party & invoice wise
 - Sales Dashboard

6. Finance

- Multiple Financial Entities and Periods
- Multiple Currencies
- Chart of Accounting
- **Ledgers management** :: General Ledger , Sub Ledger 1, 2
- Bill processing of material and services
 - Vendor, Job worker, Service provider, Sales Return
- **Ledgers Automatic processing at Sales invoice**
 - Sales A/c, Duty Ledger A/c, Taxation Ledger A/c
- Journal voucher validation and balancing
- Complete Bookkeeping
- **Aging analysis** :: Payment issuing, Payment receiving
- **Payment System**
 - Receivables & Payables Management
 - Payments Allocations
 - Individual/batch payments
 - Follow-up / reminder against receiving
 - Pay voucher E-mailing
- **Banking**
 - Cheque Book entry, Approval & Clearance as per bank
 - EMI payable scheduling
 - Bank Reconciliation
- Cost & Profit Centers
- **Fixed Assets Management**
 - Depreciation master – company / income tax act
 - FA Register
- Income tax – TDS register
- **Ratio Analysis** :: Budgeting and Financial controls
- Drill Down and Data Mining
- **Analysis & Reports**
 - User defined BS, P&L and Trial Balance Layout
 - Ledger transaction statement
 - Voucher register
 - Debtors & Creditors summary
 - Aging Finalization statement
 - Inventory Valuation of Store+WIP+ Jobwork on FIFO & WAP

7. Taxation

- HSN/SAC Master Data Foundation
- **GST Structure & Design** – SGST, CGST & IGST
- GST Business Models, Compliance system, Input Tax Credits, Returns, Payments and Refunds
- **GST Return Filing** –
GSTR 1, GSTR 2, GSTR 3, GSTR 4, GSTR 7, GSTR 9
- **Nature of Document & Reports**
Invoice for outward supply
Invoice for inward supply from unregistered person
Revised Invoice
Debit & Credit Note
Receipt, Payment & Refund Voucher
Delivery Challan for job work & supply on approval
Delivery Challan in case of liquid gas
Delivery Challan in case other than by way of supply

8. CRM

- Elaborate market segment – zone, area, territory, town
- Contact Management
- Sales Enquiry, Quotation and amendment
- Quotation Finalization & Order Receiving
- Sales forecasts
- Customer Support and Service
Complaint Login and Analysis
Case Management - History Assign calls to various
Call handling agents & customers
- Warranty management
- Customer Satisfaction/Feedback

9. Costing

- Master of Bill of Material (MBOM)
- Cost Centers
- Cost Element Groups
- Cost Element and Expenses
- Allocation of Cost Centers with department & routing
- Purchase Cost auto uploading as per BOM
- Material Consumption auto uploading as per BOM
- General Consumables consumption uploading
- Employee salary uploading
- Service Cost Center allocation and direct uploading from finance voucher
- Production Routing
- Operation Master
- Bill of Operation (cycle time, manpower)
- Element Cost Calculation
- Operation Cost Calculation
Standard
Actual (step-by-step)
Adhoc – user define Cost Element & Expenses enter on periodic basic
- Product Cost Calculation
- Product price lunching to sales
- User define MRP uploading
- BOM Cost Approval
- **Analysis & Reports**
Costing Sheet
Cost Center Expenses

10. Maintenance

- Elaborate Machine & Instrument Master
- Preventive Maintenance Check List Specification
- Preventive Maintenance Planning & Scheduling
- User Complain Login & Solutions
- Auto Breakdown Login & display on dashboard
- Breakdown Alerts through E-mail & SMS
- CBM (conditional base maintenance)
- AMC Registration & Alerts
- **Analytical Report**
 - Breakdown Analysis & Control
 - Equipment having recurring jobs
 - Plant wise Equipment vs Defect
 - Equipment wise Failure Analysis
 - Cause wise Failure Analysis
 - Failure vs Frequency Graph
 - Equipment Expenditure Analysis
 - Section wise Equipment Analysis
 - Equipment Wise MWRs
 - Mean Time to Repair (MTTR)
 - Mean Time to Failure (MTTF)
 - MWR wise Expenditure

11. Engineering

- Customer Enquiry
- Feasibility & New Development
- Master Data Creation
- Master of Bill of Material & Process Routing
- Trial Lot Generation
- Customer Approval
- Master Data Updation & Finalization
- Bill of Material Costing
- Test & Measurement Automation
- Life & Reliability Testing
- APQP Chart

12. Tool Production

- Routings & Product significant management
- BOM - Multi-level & Process wise
- **Operation Management**
 - Process lead time
 - M/c and Manpower Utilization
- **Planning Control**
 - Customer Order & Projection Planning
 - MRP (material requirement planning) against BOM
 - Auto Indenting to Purchase
 - Jobcard Creation
 - Process Scheduling
- **Production & Jobcard control**
 - Operation wise production
 - Final production
 - Machine Loading & Planning Derivative
 - RM consumption against WIP
 - Priority based task Management
 - Highlighted tasks
 - Measure Load Factor
 - Rework Assignment
- Shop floor Planning
- Resource Tracking
- Rework Treatment
- **Dashboard**
 - Production Order Schedule
 - Machine Loading Schedule
 - Plan overdue alert system
- **Analysis & Reports**
 - Production Process Tracking
 - Operation Cost Analyzer
 - APQP Chart
 - PMT (project management timing) Chart
 - OEE Report

13. HRM

- Elaborate Employee Master
- Employee Categories, Grades and other Parameterization
- Grade wise and Employee wise Salaries
- User define any number of Salary
- Components Statutory Deductions like Provident Fund and Employee Insurance Regular and Adhoc Deductions
- Salary Processing and Pay Slip Generation
- Transfer Salary to Banks or Direct Payment
- Statutory Payments Returns to the Government
- Complete Leave Management
- Process Training Sub Module
- Integration with other Modules for Salary data Transfer, Reports and MIS
- Employee Benefits like Leave Encasement and LTC
- Extensive Manpower Management Reporting
- Complete Statutory reporting and Returns e.g. for PF and ESI Bonus and Employee Gratuity Management Events reporting

14. Administration (System)

- Architecture of all type of Item Master (FG, SFG, RM, Packing, Fixed Assets, Consumable etc.)
- Hierarchy of Item Categories – type, group, subgroup
- Separate Serialization of both Bought and Manufacturing material
- Parameterization of Materials ::
Multiple units of measurement,
Basic Rate for purchase control, product picture
- Geographical Areas definition - Regions and Zones
- Geographical, Statutory and Financial Architecture of all type of Party Master -
(customer, vendor, job worker, service provider)
- Enterprise wise interaction entities - Bank, Transporters
- Definition of roles to operate the various enterprises
- Financial limits for approval of various transactions
- User Management and Access Control

15. Branch Automation

- **Multiple Branches connection with HO**
Auto transacted data Export & Import from branch Database to Master Database on daily basis at fixed time schedule
- Importing New item master code from Master Database and Explode to every branches separately
- **Consolidated & branch wise report**
Daily Sales summary
Daily Stock status
Reconciliation of branches – stock transfer vs Receiving
Consolidation of Finance reporting - Trial Balance, Account payable and receivable
Consolidation of Statutory compliance – GST3B, GSTR1 etc.

BAIS®

Product Engineering

- ## Product Costing

- [illegible]

"An innovative technology"

BAIS®

Product Engineering

- ## Product Costing

- | Production Kick off Sheet | | | | | | | | | |
|---------------------------|--|--------------------------|---|------------------------|---|--|------------------|--|--|
| KOS NO | 162002364 | Mkt. Ref No | IM-3762 | KOS Date | 02/08/2016 | 6:33:02 AM | | | |
| Customer Name | XXXXXXXXXXXXXXXXXXXXXXXXXXXXX-XXXXXXXXXXXXXXXXXXXXXXXXXXXXX | | | | PO Date | 02/02/2015 | | | |
| PO NO | <input type="checkbox"/> mail dated 29jan15 | Amdt. No | 0 | Amdt Date | _/_/ | | | | |
| Mould Maintenance | TO BE DONE BY JBJ, COST BY CUST | | | Deflashing | <input type="checkbox"/> Yes <input checked="" type="checkbox"/> No | | | | |
| Mould Made By | JBJ | Post Process Assembly | <input type="checkbox"/> Yes <input checked="" type="checkbox"/> No | | | | | | |
| | | Any Special Packaging | <input type="checkbox"/> Yes <input checked="" type="checkbox"/> No | | | | | | |
| Our FG Name | HARPIC CAP-105583 | | | Cust. Part Name | HARPIC CAP | | | | |
| KOS Plan Qty | 3000000 | Our FG Code | 162402003 | | | | | | |
| KOS Rate | 0.7543 | INR | PO Rate | 0.7082 | INR | | | | |
| Material Details | | Component Details | | Packing Details | | Other Information | | | |
| Rcode | Material Name | Qty Req. | Mat. Vendor by Cust | Mat. Rate by Cust | Mat. Vendor by Us | Mat. Rate by Us | Alternate Status | | |
| ▶ 120102002 | PP H 110 MA | 98 | RELIANCE INDUST | 84.27 | RELIANCE INDUSTRIE | 84.27 | N | | |
| 120111042 | M.B. RED (BRIGHT) 1700 | 2 | ALOK INDUSTRIES | 310 | ALOK INDUSTRIES | 310 | N | | |
| ◀ ▶ | | | | | | | | | |
| | | | | Add | Update | Delete | Excel | | |
| Material Name | | | | | Rcode | | | | |
| Quantity Required | | Unit of Qty | <input type="radio"/> % <input checked="" type="radio"/> PCS | Total % of Qty | <input type="checkbox"/> | 100 | | | |
| Mat. Vendor by Cust | | | | | Vcode | | | | |
| Material Rate by Cust | | | | | | | | | |
| Mat. Vendor By | | | | | Vcode | | | | |
| Material Rate by Us | | | | | | | | | |
| Alternate Status | <input type="checkbox"/> No <input type="checkbox"/> Yes | | | | | | | | |
| Material Details | | Component Details | | Packing Details | | Other Information | | | |
| | | As Per Customer | | Internal Target | | Tolerance Permitted On Internal Target | | | |
| Machine Specs (Ton) | 200 | | 550 | | 0 | | | | |
| Component Weight (in gms) | 4.7 | | 4.7 | | 0 | | | | |
| Runner Weight (in gms) | 0 | | 0 | | 0 | | | | |
| Burning Allowance % | 2 | | 1 | | 0 | | | | |
| Rejection % | 2 | | 0.25 | | 0 | | | | |
| ReGrind % | 0 | | 0 | | 0 | | | | |
| Cycle Time (in Seconds) | 24 | | 25 | | 0 | | | | |
| Number Of Cavities | 25 | Opr. Cavities | 25 | | 0 | | | | |
| Material Details | | Component Details | | Packing Details | | Other Information | | | |
| Attachment | <input checked="" type="checkbox"/> No <input type="checkbox"/> Yes | | | | | | | | |
| Expiring Status | <input type="checkbox"/> Quantity <input checked="" type="checkbox"/> Date | Quantity | | Expiring Date | 31/08/2016 ▼ | | | | |
| Any Other Info. | N | | | | | | | | |
| RM CHANGE | New | Save | Edit | Report | Import | Approval | Exit | | |

"An innovative technology"

BAIS®

Product Engineering

- ## Product Costing

- | NPD Costing :: Packaging | | | | | | | | | |
|--|---|-------------------------------|---------------|------------------------------------|-----------------------|---------------|--------------------|-----------------|------------|
| Routing | Lust Enquiry | Pay & Tax | Packing | Dispatch | Tool Cost | FG Costing | - | Costing No | |
| Customer XXXXXXXXXXXXXXXXXXXXXXXXXX XXXXXXXXXXXXXXXX XXXXXXXXXXXXXXXXXXXXXXXX | | | | | | | | 110007 | 17 |
| FG Name PRAN MASALA 400 GM | | | | | | | | 110101001 | 04/08/2014 |
| JDO Qty | GMS | Tol | % | Final JDO Qty | | 1000 | ENQ No | | |
| SFG Reqd | <input type="checkbox"/> No | <input type="checkbox"/> Yes | No of SFG | 0 | | | | | |
| SFG Name | | | | | | | 1 | ProdTm 14 | |
| | | | | | | | | MONO CARTON | FG Wgt |
| Product Design 1 | | Product Design 2 | | RM Updation | | | | | |
| Type | <input checked="" type="checkbox"/> Sheet | <input type="checkbox"/> Reel | Reel Size [M] | | 0 mm | | | | |
| Cartons Size | L | x | W | x | H | Volume | | | |
| No of Ups | 5 | L | x | W | Total Sheet Reqd 200 | | | | |
| Sheet Size | 300 | x | 350 | mm | BOM Reqd Qty | 0.0315 KGS | | | |
| Primary Item | BOARD | 300 | 0 | Sheet Reqd Qty | 6.3 | | | | |
| Colour Reqd | <input checked="" type="checkbox"/> Yes | <input type="checkbox"/> No | Qty | 4 | | Reel Reqd Qty | 0 | | |
| No. of Ply | 0 | | OK | | | | | | |
| BOM Cost | | | | | Operation Cost | | | | |
| MBOM Category | BOM Unit | BOM Qty | Rcode | RM Name | | RM Unit | RM Reqd Qty | LPP / Std Rate | E |
| INK | KGS | 0.0315 | 110103028 | BOARD SHEET 100x71.5CM 300 GSM FBB | | KGS | 6.3 | 50 | |
| INK | KGS | 0.000079 | 110401001 | INK 49 SPW 20 RS RESISTA YELLOW | | KGS | 0.01575 | 300 | |
| INK | KGS | 0.000079 | 110401002 | INK 50 SPW 20 RS RESISTA MAGENTA | | KGS | 0.01575 | 300 | |
| INK | KGS | 0.000079 | 110401003 | INK 51 SPW 20 RS RESISTA CYAN | | KGS | 0.01575 | 300 | |
| INK | KGS | 0.000079 | 110401004 | INK 51 SPW 20 RS RESISTA BLACK | | KGS | 0.01575 | 300 | |
| PVC FILM | KGS | 0.00105 | 110701004 | PVC FILM 145MM 175 MIC | | KGS | 0.21 | 30 | |
| LINER | KGS | 0.00105 | 110801002 | FLEXIBLE LAMINATED (12/35/60) 225 | | KGS | 0.21 | 30 | |
| COATING OFFSET | KGS | 0.000315 | 110402001 | INK COATING WB OPINKMATT 894371X | | KGS | 0.063 | 30 | |
| UV COATING OFFSET | KGS | 0.000525 | 110403001 | INK MUC 3103 MATT COATING | | KGS | 0.105 | 340 | |
| BOM Cost | | | | | Operation Cost | | | | |
| Operation Name | Cycle Time | C/T Unit | C/T OPR Cost | Rej Tol (%) | Prod Plan Qty | Product Unit | Prod Time (minute) | OPR Cost Per FG | Active |
| RESIZEING OF BOARD | 0.072 | SEC | 0.001 | 0 | 200 | SHEET | 0 | 0.0002 | Y |
| PRINTING | 0.45 | SEC | 0.008 | 0 | 200 | SHEET | 1 | 0.0016 | Y |
| LAMINATION | .7346939 | SEC | 0.014 | 0 | 200 | SHEET | 2 | 0.0028 | Y |
| FLUTE PASTING | 1.2 | SEC | 0.022 | 0 | 200 | SHEET | 4 | 0.0044 | Y |
| DIE CUTTING | 0.6 | SEC | 0.011 | 0 | 200 | SHEET | 2 | 0.0022 | Y |
| LINER PASTING | 0.2 | SEC | 0.004 | 0 | 1000 | PCS | 3 | 0.004 | Y |
| FOLDING GLUING PASTING | 0.144 | SEC | 0.003 | 0 | 1000 | PCS | 2 | 0.003 | Y |
| Total BOM Cost 0.38
<input type="checkbox"/> Actual <input type="checkbox"/> Std Total Operation Cost 0.02
Total Packaging Cost 0.02
Total Tool Amortization Cost 0
Net Cost
Final FG Cost 0.42 Profit Margin 0 % 0 | | | | | | | | | |

"An innovative technology"

Wide Range of Reporting Capabilities



Analytical – MIS

Search Engine

Exceptional Reporting

On-Demand Reporting

Statutory Reporting

Outputs in →

Crystal Report

EXCEL

CSV

HTML

RDLC

"An innovative technology"

Dashboards

- Most powerful and flexible reports on multiple parameters and groups by selecting columns, sorting order, filter conditions.
- Data is pulled from more than one context
- Very powerful filters enable real time summarized information on category and conditions
- Drill down to details up to last level (GateEntry).



Tools collect and process large data from heterogeneous sources and create insightful reports & dashboards.

- Strategic Dashboards : KPIs Strategic goals & achieving targets.
- Analytical Dashboards : Trends or deeper insights Analytics.
- Operational Dashboards : Data awareness, Time sensitive data and tracking

On Line Stock Status

Mat. Type Mat. Group Mat. SubGroup Material Master

☐ All
☒ 11-RAW MATERIAL
☐ 21-PACKING MATERIAL
☐ 31-MACHINERY SPARES
☐ 41-TRADING
☐ 51-CONSUMABLES
☐ 61-GENERAL
☐ 71-FIXED ASSETS
☐ 81-SEMI FINISHED
☐ 91-SCRAP

OK Material Search Next Clear

Numeric Formula Builder
 All < > =

☒ WIP Bal ☐ Batch ☐ Bin Stock

Active Triger ☐ All ☒ Yes ☐ No

Execute Mode ☐ All ☐ Date

1

Execute to Grid Clear Download to Excel

☐ Branch Stk ☒ WH Stock

☐ Batch Diff ☐ BinStock Diff ☐ Zero HSN ☐ Zero WAP Rate ☐ WIP Bal >0 (greater than zero)

Filteration

Rcode	Raw Material	Unit	Current Stock	Booked Qty	Phy Stock	WIP Stock	Rejected Qty	Active	Safety Stock (MSL)	Auto Indent Qty	Re-Order Point	Avg Consum	Bin Locat	Basic Rate	WAP Rate	HSN/SAC	ABC Analyz	VED Ana
110101001	N BUTANOL (NBA)	KGS	35	0	35	0.338	0	Yes	0	0	0	0	Y	0	190	29094400	A	E
110101002	TOLUENE	LTR	1837	0	1837	5.97	0	Yes	0	0	0	0	Y	0	63	29094400	A	E
110101003	IPA	LTR	9	0	9	0	0	Yes	0	0	0	0	Y	0	0	29094400	A	E
110101004	THINNER SLT	LTR	1300	0	1300	206	0	Yes	0	0	0	0	Y	0	0	0	A	E
110101005	REDUCER SPL	LTR	0	0	0	3000	0	Yes	0	0	0	0	Y	0	0	0	A	E
110101006	SOLVENT BUSTER	KGS	1	0	1	1	0	Yes	0	0	0	0	Y	0	0	0	A	E
110101007	MATT FINISHER MK0016-SIG 22879E	KGS	20	0	20	0	0	Yes	0	0	0	0	Y	0	0	0	A	E
110102001	NPA	KGS	2590	0	2590	704.179	0	Yes	0	0	0	0	Y	0	126	29094400	A	E
110102002	NPAC	KGS	180	0	180	133.497	0	Yes	0	0	0	0	Y	0	148	29094400	A	E
110102003	----	KGS	0	0	0	0	0	Yes	0	0	0	0	Y	0	0	0	A	E
110103001	RETARDER (ETHYL CELLOSOLV)	KGS	1030	0	1030	82.77	0	Yes	0	0	0	0	Y	0	0	29094400	A	E
110103002	VNV7450 HSL	KGS	660	0	660	0	0	Yes	0	0	0	0	Y	0	0	29094400	A	E
110103003	VEETAC-PC 40	KGS	0	0	0	0	0	Yes	0	0	0	0	Y	0	200	29094400	A	E
110103004	VEETAC-PC 100	KGS	0	0	0	1389.799	0	Yes	0	0	0	0	Y	0	240	29094400	A	E
110103005	VEETAC-PC 200	KGS	0	0	0	200	0	Yes	0	0	0	0	Y	0	0	29094400	A	E

Total Record 440 BOM Qty Ledger Image Preview Warranty Status Exit ☐ Advance Feature Hints :- >>> Curr.Stock = Phy Stock - Booked Qty

Reports & Analyzer

Report Engines

- Most powerful and flexible to customizing reports on multiple parameters.

Parameterized Queries

- All the fields in the given context are listed in homogenous groups . User selects choice of operator <, <=, >, >=, =, LIKE and a value on which query is to be applied. Any number of fields can be selected for extract a long query
- User specific conditional reporting or generate exception report.
- Lot of combinations are possible using one single user interface.
- The specific can be saved for future recall.
- The report extract can be taken into Excel, HTML, PDF,CSV, etc.

Report for Receiving Register

Select Field To Filter

vcode
qcno
qdate
qcqty_acpt
poqty
sedate
seqtyrecd
amdtno
rcode
rname
vname
geno
gedate
geqty
pono
excNexttype
vCountStatus
Mattype
podate
seno
qcqty_rej
Balqty
porate
CurrUnit
RcptValueINR
pinvno
postax

Numeric Formula Builder

<

>

=

+

X

And

Or

Clear

{RMStat.geno} = 200000049

No of Records:

01/04/2021

11:01 AM

FG

1 of 1

2 of 2

100%

Global Parachem LLP

C-19,Sector-A2, Tronica City, Loni, Ghaziabad, UP

MM :: Inventory :: RMS

MATERIAL RECEIVING & INSPECTION REPORT

Dep't Name : RM Store

Document No :

Document Nam: Material Receipt & Inspection Report

No. of copies of this Doc

Material Type : ST

MRR Type : Excise

Rcvd Type : Normal

Vendor : HENKEL ADHESIVES TECHNOLOGIES INDIA PRIVATE LIMITED

Mode of Transport: Road

No of Packets : 2

No of Doc. : 2

Receipt Observati

MRR No : 210001609

MRR Date : 22/02/2022

GE No

GE Dt

PO No

PO Date : 25/01/2022

Inv Type : I

Inv/Ch No : 67662

Inv Date : 19/02/2022

No of Records: 01/04/2021 11:01 AM

Sr No	Item Code	Item Description	Unit	Qty as per Inv/Ch	Qty Recpt	Qty Accpt	Qty Reject	PO Value (Basic Rate)	Curr Unit	QC No	QC Date	QC Status	Inspection Remarks
	510201001	TECHNOMELT PS8051	KGS	2,000.00	2,000.00	2,000.00	0.00	500,000.00	INR	213002148	23/02/2022	ACCEPTED	N
	510201003	TECHNOMELT PS8008	KGS	2,000.00	2,000.00	2,000.00	0.00	540,000.00	INR	213002147	23/02/2022	ACCEPTED	N
Total Value								1,040,000.00					

Statutory Form N : 0

Indenting Number : 0

Indenter Name :

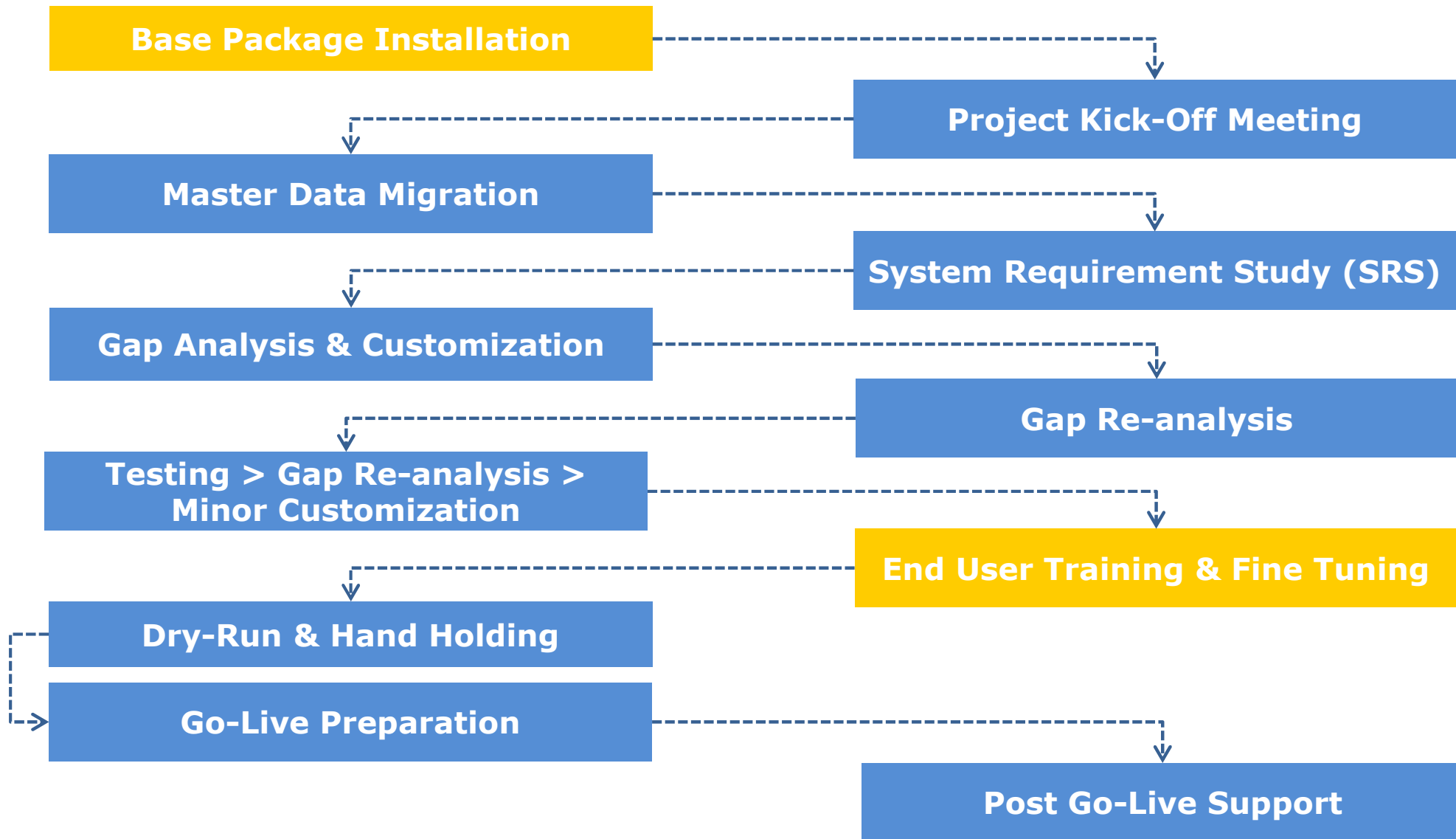
Inspected By : ARPIT GUPTA

QA Head :

Officer - Store : HIMANSHU

Manager - Store : ARPIT GUPTA

Executive (Accounts)



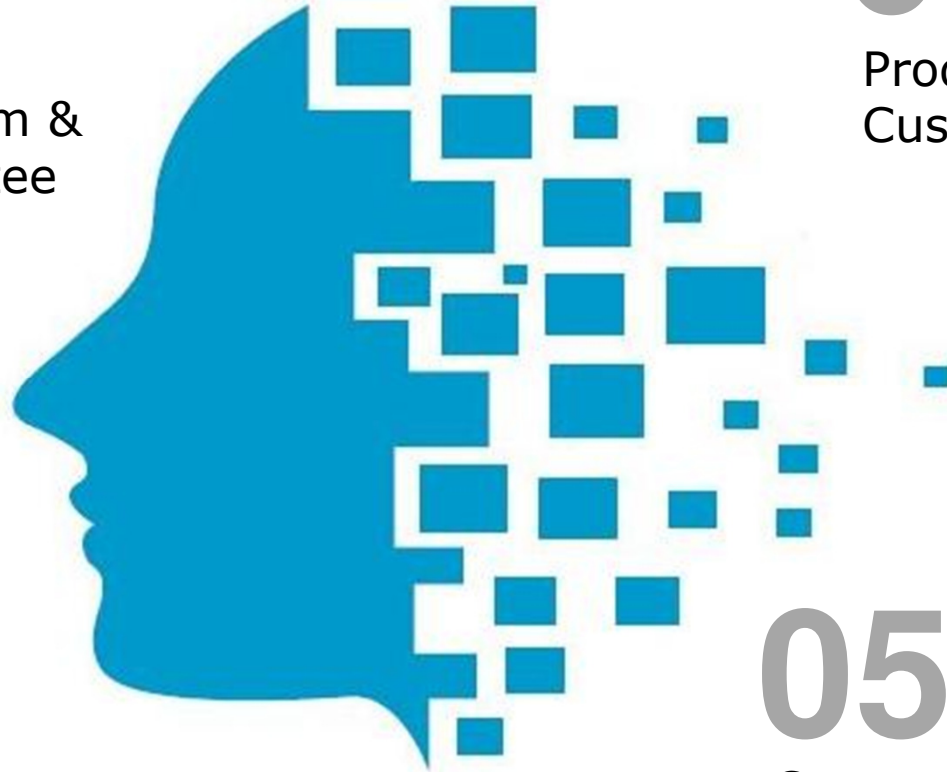
Team **aSoft** is committed to **Maximizing your Success**

01

Management Team &
Steering Committee

02

Implementation &
Consulting



03

Product & Process
Customization

04

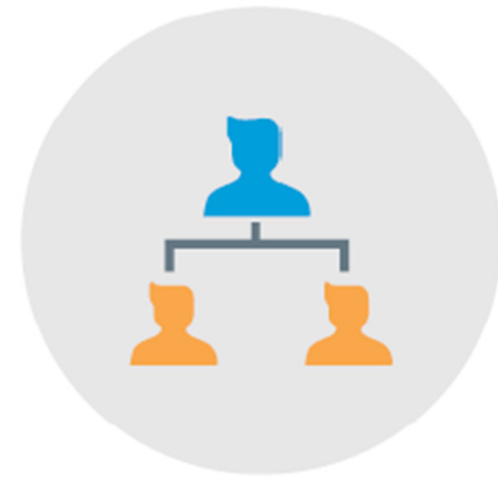
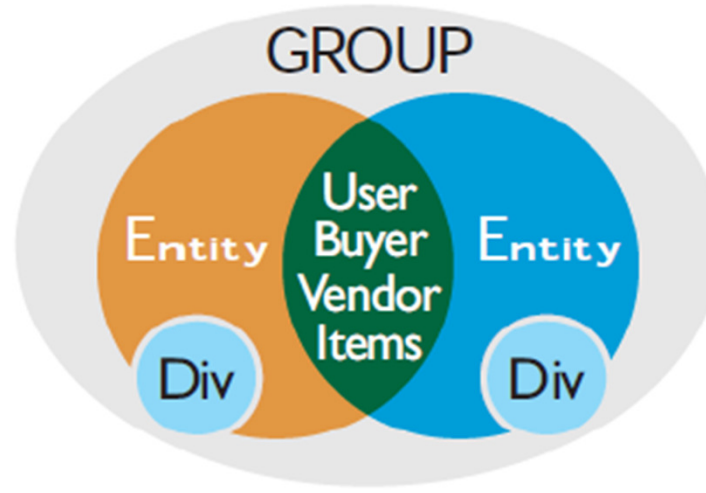
Quality & Audit Team

05

Customer Support Team

We are staffed by smartest minds in the business

**PLATFORM THAT
ENABLE YOU TO GROW**



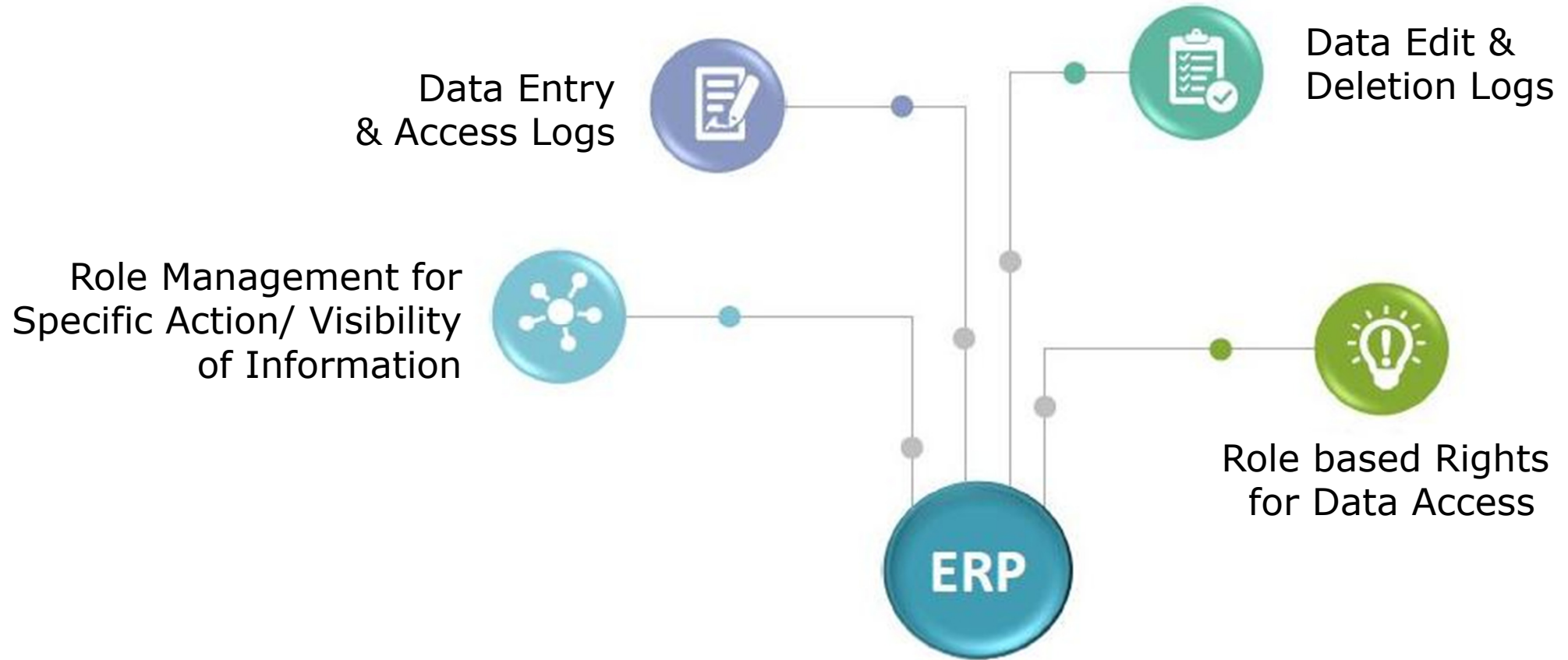
- 01 Expansion of existing Business, Addition of Divisions/ Plants Vertically (Entity –Division –Plant)
- 02 Addition of New Business Segment (Schema-Vertical)
- 03 Addition of new type of transaction type / business process e.g. Export / Import / Depot / Banks (Configuration)
- 04 Extension of hierarchies for controlling delegation
- 05 Addition of Customer / Supplier / Stake Holders / Product Line can be Configured
- 06 Addition of New Users

Factors that affect BPR Rationalization and Optimization Transferring



Transferring speed into Business Benefits

- ❖ Application modernization
- ❖ Application harmonization
- ❖ Business Process optimization and innovation
- ❖ System landscape simplification and consolidation



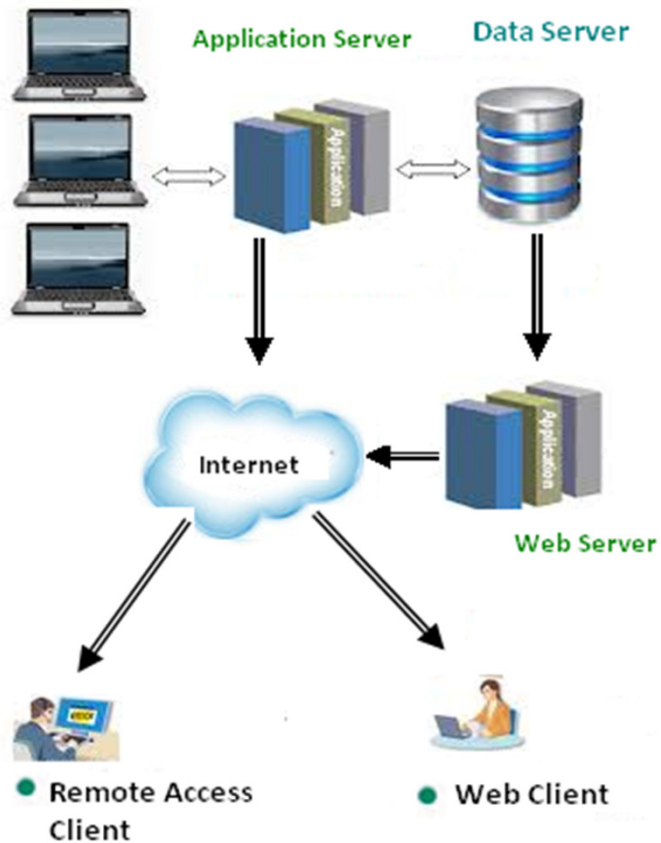
Robust Database

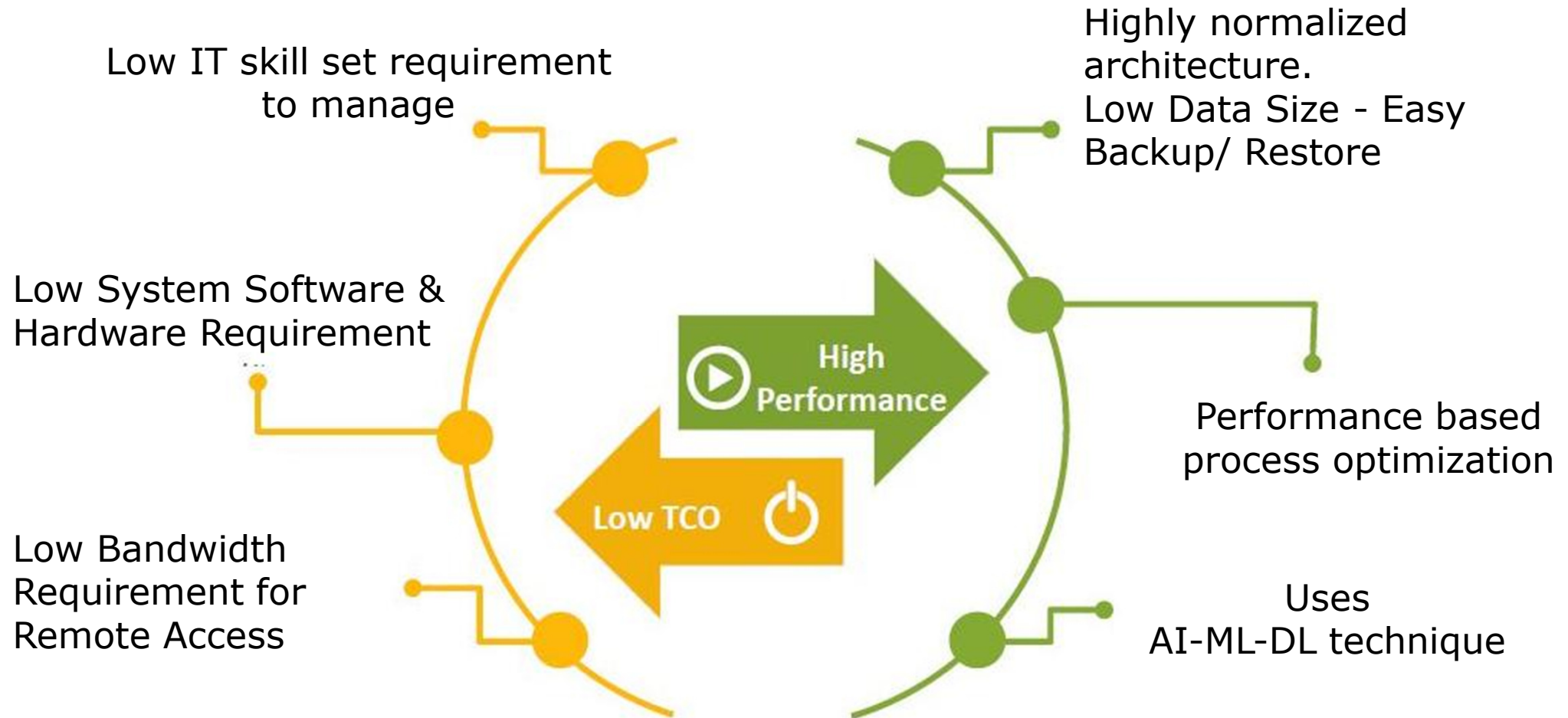
Highly scalable. Unmatched data integrity. Fast, reliable and secure. Supports high-availability database workloads.



Deployment Architect

Client Application





Architecture	DotNet, Client Server, Web(2/3/n Tier)
Database	MSSQL, MS Access, MySQL
Development Tools	VS code, ASP.net, Crystal, RDLC
Language	C, C++, C#, VB.net
Application Framework	Executable exe(s), Server less application (Low deployment)
Web Technologies	Html, CSS, JQuery, Bootstrap, Scss, JavaScript, AJAX, JSON, Web Services, Angular
Operating System & Browsing	Windows, IE, Android
BI & Reporting Tool	aSoft Chart
Cloud Deployment	aSoft VPS, Client VPS
<u>System Requirement</u>	
Physical Server	Tower Model, Processor Xeon (3.3 GHz), 16GB RAM, 1TB HDD
LAN / WAN	Switch, FTP, Static IP for Access Gateway on VPN

Implemented

Electronics & Electricals

Lighting (LED)

Automotive

Injection Molding

Tool & Die Product

Medical & Lab Equipment

Flexible Packaging

Box Packaging

Gems & Jewelry

Fabricated & Sheet Metals

Wire & Cable

Modular Furniture & Fixtures

Rubber Industrial Product

Infrastructure & Products

Defense Equipment & Accessory

Consumer Durables (Pipe & Bathroom)

Best Appropriate

Pharmaceuticals

Cutlery & Household

Electricals

Footwear

Paper Products

Apparel & Garment

Sports Goods

Chemical

Food And Beverage

Engineering

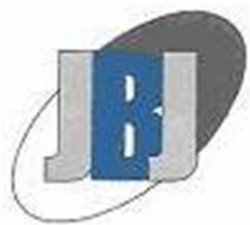
Cement

Steel & Mill Products

Printing Press

Agriculture Product

Dairy Product



Our Representative & Sales Partner available at

PATNA, RANCHI, JAMSHEDPUR , VANARASHI, KOLKATA

LUCKNOW, KANPUR , HARIDWAR, CHANDIGRAH

<http://www.asoft.co.in/login.html> : Link for DEMO slides

Contact Us



aSoft Solutions

E-47, 2nd FLOOR, SECTOR – 7,
NOIDA – 201301,
U.P, INDIA

MSME UAN - UP28D0003206



+ 91-120-4356620
+ 91-9810514593
+ 91-9971083859



info@asoft.co.in
www.asoft.co.in
